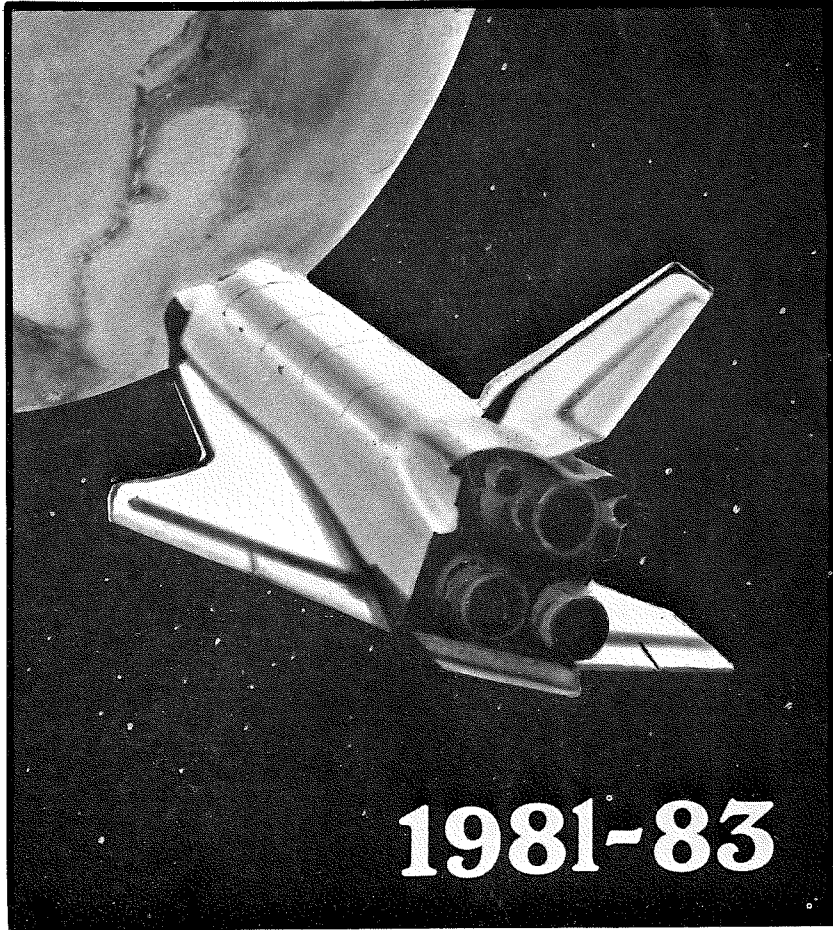
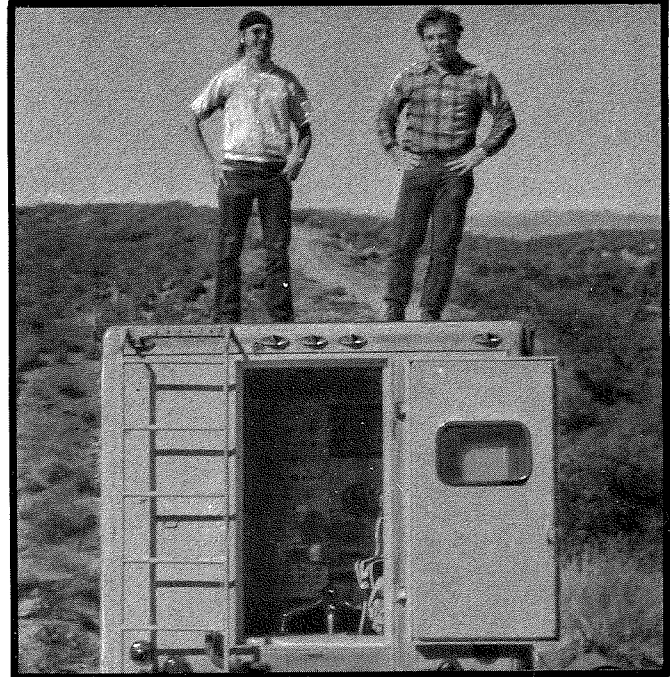
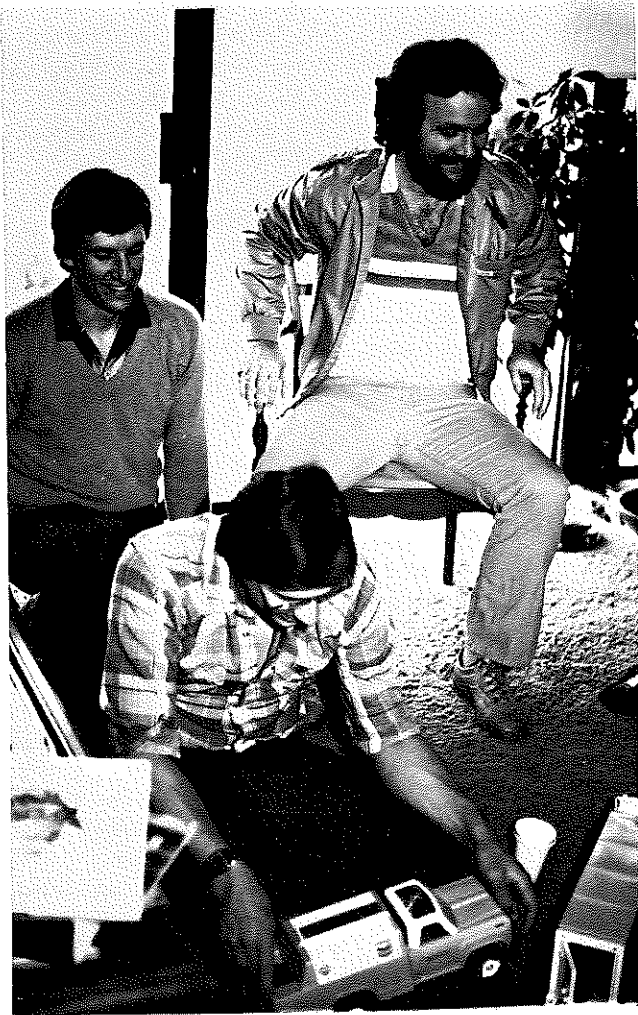


# *Ingersoll* Earth and Space Sciences Newsletter



**1981-83**



*GULF OIL employees Larry Knauer, Joe Polovina, and Dick Kettler were caught playing with a CHEVRON OIL truck at a post-alumni day brunch at the home of Bob and Vicki Jones.*

## A

**ROBERT ABELSON** (Ph.D., 1981) took a year off from geophysics to lose just over 200 lbs. Even his mother didn't recognize the new Bob. He lives and works in the Bay area and takes time each day to walk at least ten miles.

**WILLIAM L. ADAMS** (M.A., 1956) became President, Champlin Petroleum Company, Box 7, Forth Worth, Texas 76101, in September 1981. He had

spent 25 years with Amoco Production Company where he had been Vice President of Exploration and Regional Vice President. In response to the question "What did you like best about the Department," he wrote: "Association with John Crowell and Philip King at UCLA was fantastic. The independent work of mapping along the Big Pine was excellent preparation for oil exploration work. I am completely out of touch with the UCLA Geology Department now, so have no comments re that."

**LISA ARMSTRONG (WARNEKE)** (M.S., 1982) is in Tucson while her husband Jim completes his internship in general surgery. Lisa is an isotope geochemistry research assistant in the Geosciences Department at the University of Arizona. Lisa and Jim have purchased their first house, a Santa Fe style pueblo, and are enjoying the weather: "I must say that I don't miss fog at all!" Her new address: 1294 Paseo Alegre, Tucson, Arizona 85719.

## B

**JOHN BACHELLER** (M.S., 1978), who has been with Mobil Oil for nearly four years, has recently transferred from Houston to Mobil Exploration and Production Services, Inc., P. O. Box 900, Dallas, Texas 75221. He has worked on production geology in the Permian Basin and did seismic interpretation in the Louisiana offshore for the October 1982 lease sale. He writes: "After mapping around Twenty-nine Palms, I'm in seventh heaven with all of the seismic lines and well control available - a real opportunity to find out how the earth works." He gave a talk on his thesis work at the Cordilleran GSA meeting in Hermosillo, Mexico, and enjoyed seeing some of the old UCLA crowd. His home address is 5355 Monticello Avenue, Dallas, Texas 75206.

**JAMES M. BARKER (B.S., 1969)** wrote that he was researching fluid inclusions and oxygen isotopes in the geothermometry of borate deposits while managing a field office in Reno, Nevada, for Phillips Petroleum, Strategic Minerals Division, Box 6256, Reno, Nevada 89513. He wrote a new chapter in *Industrial Rocks and Minerals* for SME of AIME that covered all aspects of the sulfur industry and the geology of sulfur, and he has held several offices in the Industrial Minerals Division of SME of AIME, one of which was editor of reviews on chemical raw materials for the *Mining Engineering Journal*. Unsubstantiated rumor has it, however, that he has moved within the last year to work for the New Mexico Bureau of Mines in Socorro, New Mexico. Where are you, Bark?

**JOHN BARRON (B.S., 1969; Ph.D., 1974)** is working for the paleo-stratigraphic branch of the U.S. Geological Survey, 345 Middlefield Road, Menlo Park, California 94025. He has been promoted to branch representative and is researching marine diatom biostratigraphy, paleoclimatology, paleoceanography, and deep-sea hiatuses DSDP Legs 57, 63, and 85. He has published recent papers in *DSDP*, *Micropaleontology*, *Marine Micropaleontology*, and *Geology*, and was elected 1982 Vice President of the Pacific Section SEPM. Being a faithful sleuth, he reports that **GLENN WAYCHUNAS (Ph.D., 1979)** is at the Stanford Center for Materials Research; **MARGARET KELLER (B.A., 1972)** is at the Branch of Oil and Gas at the USGS in Menlo; that **DAVE MILLER (Ph.D., 1978)** is also at the USGS Menlo in the Western Regional Geology Branch, and that **BILL KREBS (B.S., 1970)** is at AMOCO in Denver. John felt that the Department's assets are its close interactions, its strong field program, and its fine library. He sees that there could be improvement in the soft-rock program and paleontology,

which should not be museum paleontology but interactive with geological problems: tectonics, oceanography, sedimentary minerals, and paleoclimatology.

**LILA BHUTA (B.S., 1980)** works for TRW and is finishing up a Master's in Petroleum Engineering at USC according to information supplied by Donna Young, the new Administrative Assistant for Clarence Hall's White Mountain Research Station.

**MICHAEL BINDER (B.S., 1973)** has moved back to California to take up a position with Atlantic Richfield, Materials Development Lab., 20717 Prairie Street, Chatsworth, California 91311. He had been laid off in August 1982 from a position at Olin Corporation's Chemicals Research Center in New Haven, Connecticut. Mike had attended Yale through the M.S. and Can. Phil. degrees but has yet to finish writing his dissertation. In 1983 he published "Sphalerite Stratigraphy and the Non-equilibrium of Ore Deposition" in the Proceedings Volume of the *International Conference on Mississippi Valley - Type Lead-Zinc Deposits*, University of Missouri-Rolla. Home address: 123 S. Clark Drive, Apt. 4, Los Angeles, California 90048.

**DONALD R. BINNS (B.A., 1957)** 408 Laguna Terrace, Simi Valley, California 93065, is a Program Manager, ACP Demonstration Plant Program, Rockwell International, Canoga Park, California 91304. They are currently building and operating a state-of-the-art fluegas desulfurization plant near Buffalo, New York, adjacent to the 600 MW Coal Fired Electric Generating Station. He received an MBS degree in industrial business management from Cal State University, Northridge, in 1971. His article, "ACP Demonstration Plant Program," appeared in the EPA Fluegas Symposium Proceedings in 1978.

**ALLISON ZWEIGLER BORMUTH (B.S., Engineering Geology, 1979)** spends part of her time teaching cartography and geology in a small liberal arts college. She retired from Testing Laboratories, Inc., where she worked as a lab and field technician and consulting geologist ("as required") for soil and concrete testing and control on construction projects. Her current research includes the study of placer gold deposits in western North Carolina and current field techniques in recovery. "Other activities include cleaning and upkeep on a new house with swimming pool recently acquired on ten acres of 'Mountain' land." What she liked best: "Liquidus and field trips." Home address: Route 4, Box 701, Morganton, North Carolina 28655.

**VICTOR BOTTS (B.A., 1955)** is the Manager, Nevada Operations, for Placer Amex, Inc., whose operations include the McDermitt Mine and Cortez Gold Mines. He writes that he frequently flies over Sulphur Springs and the Pinyon Ranges - the site of the 1956 UCLA summer field camp - in a small plane and that it "brings back less than fond memories of plane table measurements of the entire geologic section of Coffin Mountain." His address is P. O. Box 218, McDermitt, Nevada 89421.

**NORMAN BRADLEY (B.A., 1951)**, 701 Linda Vista Avenue, Pasadena, California 91105 is a Supervising Civil Engineer for the Los Angeles County Flood Control District, Box 2418, Los Angeles, California 90051. He spent two years (1951-1953) working for Mobil Oil, eight years in planning and design of the saline barrier system for the L.A. County Flood Control District, fifteen years supervising repair and maintenance of flood control and water conservation facilities, and six years in contract administration. He is a fellow in ASCE, member of the U.S. Committee on High Dams, and an affiliate in the

Association of Engineering Geologists. He writes: "When I was at UCLA I was married, had one child, and worked nights loading box cars in Vernon. It was a *real* strain to do the work necessary to get my degree in geology in 1951. I now have four children - all graduates from Cal universities and off my personal dole. Life is somewhat easier. I still enjoy geology, but now as an avocation." He also reports that **WILLIAM B. YOUNG (B.A., 1952)** is working for the Water Conservation Division of the L.A. County Flood Control District.

B. Brick Robinson reports that **GEORGE BROWN (B.A., 1953)**, "formerly with Marathon Oil and Oxy Petroleum, Inc., in Houston, has been the District Exploration Manager for Oxy Petroleum in Midland, Texas, in recent years. In May (1982) George was promoted to Geological Manager for Cities Service Oil and Gas Company in Midland (Cities is the new domestic subsidiary of Occidental Petroleum Corporation). The address is Box 1919, 500 West Texas, Suite 700, Midland, Texas 79702."

**ROY T. BUDNIK (Ph.D., 1974)** 6608 Argentina Road, Austin, Texas 78731, is a Research Associate at the University of Texas, Bureau of Economic Geology, University Station Box X, Austin, Texas 78712.



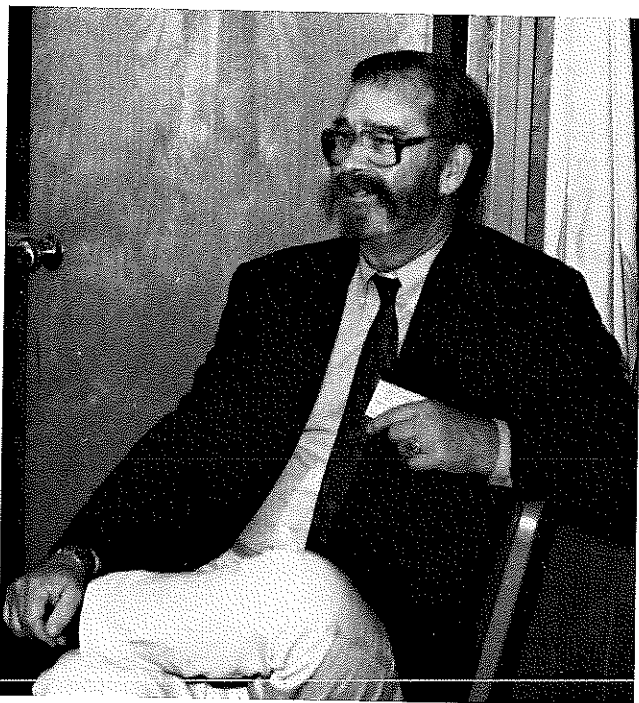
**JERI LYNN CAMERON (see RODGERS).**

**ROBERT CLAUER (M.S., 1974, P&SS; Ph.D., 1980, GASP)** recently joined Professor Pater Dank's Stanford telecommunications and Radioscience Group.

**XENOPHON C. COLAZAS (B.A., 1958)**, geologist with the city of Long Beach for 23 years, was chosen in July 1982

to head the city's Department of Oil Properties, where he will be responsible for monitoring the city's long-standing problem of subsidence, a problem that commands the attention of 40 technical experts. He was chosen after a three-month, nationwide search. In addition, he has been teaching geology and environmental science courses for the Los Angeles Community College District and Compton Colleges.

John Kingsley (B.A., 1957; M.A., 1963) reports that ROY COPP (M.A., never) was seen tossing the caber in the Highland Games in 1981.



*John Kingsley recounts the recent activities of Roy Copp.*

ANITA CREWS (Ph.D., 1980), one of Clem Nelson's ex-students, now teaches at the University of Minnesota.

STEVE CROFT (M.S., 1976; Ph.D., 1979) studies Galilean satellites at LP 1.

**D**

SARAH PIERCE DAMASSA (Ph.D., 1979), 3 Ridge Street, Winchester, Massachusetts 01890, is a palynological consultant at the above address. Beginning in January 1984 through 1986 she will be doing post-doctoral work as a Bunting Institute Fellow (Radcliffe). Her research on Late Precambrian acritarchs will be carried out at Harvard in collaboration with Dr. Andrew Knoll. Sarah had been a consultant for Amoco in Denver from November of 1982 through June of 1983, and had also worked for the USGS in Reston and for Wirth Associates in San Diego (1982). Her second child (son Thomas is now three years old) was due in August.

STEVEN N. DAVIESS (B.S., 1940; M.S., 1942), 3961 S. Dexter Street, Englewood, Colorado 80110, has retired from his position as Exploration Manager for Gulf Mineral Resources Company, where he worked on overseas petroleum exploration and tectonics of island arcs and published papers on the structure of the Barbados. He is now in private consulting.

JOAN DELANY (Ph.D., 1981) works as staff scientist at Lawrence Berkeley Laboratory.

HARRY DEMAREST (Ph.D., 1974) teaches in the Geology Department of Oregon State University.

A. LEE DIEHL (B.A., 1948), 300 Tranquille Place, Mandeville, Louisiana 70448, is the Geological Engineering Advisor, Shell Oil Company, P.O. Box 61555, New Orleans, Louisiana 70161. He returned in August 1981 after eleven years of overseas assignments with affiliated Shell companies: three and a half years in Nigeria, followed by three and a half years in Shell International's

Technical Office in The Hague, Netherlands, where he was Chief Production Geologist for the Shell Group, and then four years in London, England as Petroleum Engineering Manager for Shell UK, the operator for the Shell-Esso joint venture. In answer to the question, "What did you like best about the Department," he writes, "The broad and thorough background in fundamentals. I have always felt comfortable in the wide variety of geology I have encountered in the oil business in general. Within Shell, I have worked in research (five years) and all phases of operational geology in the U.S.A. and in every foreign company in which the Shell Group operates without coming up short with basic geological understanding. Back here in the U.S., I am frequently surprised to hear geologists of the "younger generation" excuse themselves from knowledge about some peripheral aspect of a problem on the grounds that it wasn't part of their major. I can only hope that *all* UCLA Geology grads continue to be well educated and well informed in the basics."

PHILLIP DOBBS (B.A., 1955) is now a Senior Geologist at United States Borax and Chemical Corporation, 3075 Wilshire Blvd., Los Angeles, California 90010.

T. W. DONLON (B.A., 1942), 5939 La Cumbre Road, Somis, California 93066 worked for Standard Oil until his recent retirement.

BRUCE DOUGLASS (M.S., 1967) has ascended to new heights as chief of geodetic research at NOAA, Rockville, Maryland.

DAVID DOUGLASS (B.A., 1980), is a Master's candidate at Department of Earth Sciences, Dartmouth College, Hanover, New Hampshire 03755. He is working on the Morrison and Cloverly Formation, Big Horn Basin, Wyoming, and the Billefjorden Fault Zone, Evalbard, Norway. He reports that KAIRIN

HAFNER (B.A., 1981) is a Master's student at Boston College, and that her address is 21 Tip Top Street, Brighton, Massachusetts 02135.

PAUL H. DUDLEY, Jr. (M.A., 1956) is now Senior Vice President, Exploration and Production, Consolidated Natural Gas Company, Four Gateway Center, Pittsburgh, Pennsylvania 15222. He had formerly been with Mosbacher Production Company in Houston, Texas.



RAY ERGAS's (Ph.D., 1981) work at Chevron Oil Field Research Company is so important that it's classified. At last count he needed four CRAY-1 Computers just to read his data.

JONATHAN ERICSON (B.A., 1970), is an Associate Professor at the Peabody Museum, Harvard University, Cambridge, Massachusetts 02138. His research involves biogeochemical baselines to determine environmental quality, stable isotopes, and alkaline earth ratio for human dietary reconstruction, strontium isotopes as habitat tracers, and lead isotopes of Indian copper sources. We received an impressive list of publications (including eight books and monographs) from John, among which were *Exchange Systems in Prehistory*, (288 pages) and *Contents of Prehistoric Exchange* (321 pages) both published by the Academic Press in New York, and *Prehistoric Quarries and Lithic Production*, forthcoming from the Cambridge University Press. John was the Vice-President and then President of the Society for Archaeological Science, 1980-82; a Fullbright-Hays Senior Scholar in 1979-80; is a member of a half-dozen societies; and administered nine grants during 1979-82.

FRANK A. EXUM (B.A., 1956; M.A., 1957), 3928 S. Jasmine Street, Denver,

Colorado 80237, is Regional Exploration Manager for Enstar Petroleum, Inc., 1125 - 17 St., Suite 2040, Denver, Colorado 80202. He took early retirement from Marathon Oil in Casper, Wyoming, and moved to Denver in September of 1981 to take the job with Enstar. He works closely with ED PRUSS (B.A., 1968). What did he like best about the Department? "The people!"



**THOMAS R. FAIRCHILD (Ph.D., 1975)** Universidade de Sao Paulo, Instituto de Geociencias, Caixa Postal 20899 01498 Sao Paulo, SP, BRAZIL, "continues to plod along here in the Southern Hemisphere, watching water drain from the sinks from time to time to see if the Coriolis effect is all that they say it is and wondering if maybe my problems are due to my North-South personal biomagnetism being enveloped by my South-North environmental magnetic field. My wife and son are both in good health and spirits, and I'm glad to report that I've been able to keep my weight at around 200 lbs for about three years now. Now if I could only increase my scientific productivity to a personally satisfying level, I'd be in great shape!"

**LANG FARMER (PH.D., 1982)** received a Director's Fellowship at Los Alamos National Laboratory.

**H. D. "BART" FERGUSON (B.A., 1950)** has been named Director, Research and Technology, in the Planning Department of Sun Exploration and Production Company, Dallas, Texas.

**DONALD L. FERNOW (B.A., 1947,** University of Chicago, Liberal Arts; **M.B.A., 1948,** University of Chicago; **M.A., 1952,** USC, Cinematography;

**M.A., UCLA, 1960, Geology),** an analyst at Thompson McKinnon Securities, performs financial analysis of oil and gas securities. He wrote: "Mineral fuels" for the 1970 edition of *McGraw Hill Encyclopedia of Science and Technology*. He has travelled extensively abroad collecting rock samples and/or seashells from such places as Nepal, Japan, Korea, Bali, the Philippines, Malaysia, Iran, Egypt, Western Europe, Crimea, Bulgaria, Venezuela, Brazil, Australia, New Zealand, etc. He reports that **BILL ANDRE (B.A., 1960)** works for the Department of Defense near San Jose. He adds that he feels our teaching staff and field programs are outstanding.

**TONY FINNERTY (Ph.D., 1982)** left JPL to "Professor it up" at U.C. Davis.

**G. JACK FISCHER (B. A., 1952),** 5575 DTC Parkway, Suite 310, Englewood, Colorado 80111, is the President, CNR Resources, Inc., at the above address.

**B. GORDON FUNK (UCLA, 3 years; B.S., U.C. Santa Barbara; Ph.D., Claremont),** 1210 South Ninth Street, Alhambra, California 91801, wrote: "Your departmental Newsletter was received early in January, 1983. How you dug up my name is a mystery. I attended the UCLA Geology Department for two or three years in the early 30's, but did not complete the program. Now that I have retired, I have renewed my interest in both geology and mineralogy. I was pleased, therefore, to receive information via the Newsletter about department activities, and am much interested in the lecture series and other participatory activities (i.e., field trips). I shall appreciate receiving an up-to-date schedule of seminars, field trips, etc."

## G

**JOE GALBREATH** (B.A., 1958), 1429 Eighth Place South, Edmonds, Washington 98020, is Director of Marketing, Rocket Research Company Division of Rockcor, Inc., Redmond, Washington. His company manufactures small satellite control rockets such as those used on the Viking landing on Mars and the Voyager spacecraft, which obtained excellent pictures of Jupiter and Saturn.

**CHARLIE GILBERT** (Ph.D., 1965) has escaped the geology chairmanship at Virginia Polytechnic Institute.

**ALLEN GLAZNER** (Ph.D., 1981) is an Assistant Professor at the University of North Carolina, Chapel Hill.

**HARRY GREEN** (A.B., 1963; M.S., 1967; Ph.D., 1968), Department of Geology, University of California, Davis, California 95616, continues research into plasticity of peridotites and the solubility of volatiles (H and C, principally) in olivine. He is off to Australia (Mohash) in 1984 for a sabbatical leave. He and Bruce Hobbs will look at the activation volume for flow in olivine using his newly developed 3.5 GPa pressure vessel for the Griggs apparatus. He reports that **TONY FINNERTY** (Ph.D., 1976) has joined their Department as of Fall 1982 to replace Ian MacGregor who went to the NSF; that **CORDELL DURRELL** continues in his retirement; and that **JERRY LIPPS** (Ph.D., 1966), Department Chairman at Davis for the last three years, took sabbatical leave for the first seven months of 1983.

## H

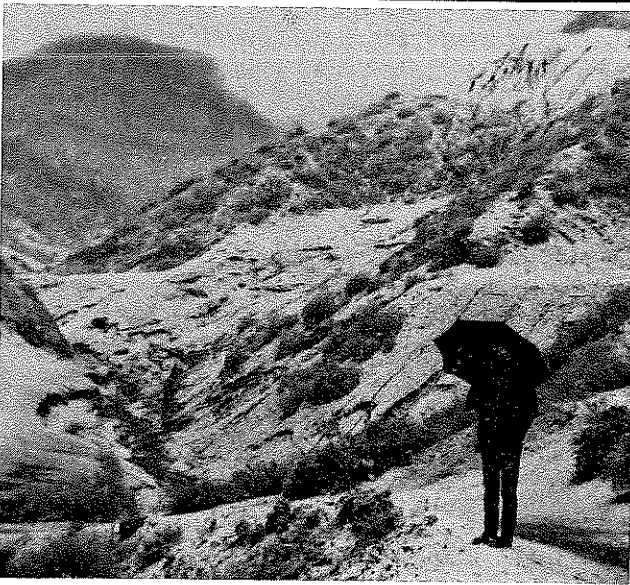
**BERNARD HALLET** (B.S., 1970; Ph.D., 1975), Associate Professor, Quaternary Research Center and Department of Geological Sciences, University of Washington, Seattle, Washington 98195, received tenure in 1981. He continues work in glacial and periglacial geomorphology. Bernard reports that **GERRY DOLLINGER** (Ph.D., 1978) is also in Seattle working for a mining company. Bernard's home address is 2019 E. Newton, Seattle, Washington 98112.

**TOD P. HARDING** (B.A., 1951; M.A., 1952), 13510 Tosca Land, Houston, Texas 77001, was promoted to Research Advisor for Exxon Production Research Company, P. O. Box 2189, Houston, Texas 77001. Tod is investigating the geology of the Khorat Plateau, Thailand, and central and south Sumatra Basins. His most recent papers are "Graben structural styles and hydrocarbon accumulations," *Geologie en Mijnbouw*, to appear in early 1983; and "Seismic characteristics of divergent and convergent wrench faults and structural inversion," in press with the AAPG. He writes that he appreciates the "best high standards of professionalism instilled by John Crowell when he was at UCLA." The editors thank him for his financial support of the Newsletter.

**DAVID HARNISH** (B.S., 1982) 1036 Rutledge Street #3, Madison, Wisconsin 53703, is specializing in economic geology at U. Wisconsin and writes: "They're keeping me really busy out here at school. My advisor is trying to turn me into a geochemist and so far it is only mildly painful, so I'll probably stick with it. This is a very good, broad department that seems to be strong in every branch of earth science. Start recommending this place to



undergrads! There's lots of money here (I start getting some next semester), and the department has a strong reputation with industry.



To his chagrin, Clarence Hall discovered that Tick Canyon had an as-yet-unmapped, recent stratigraphic sequence--snow (Qs?), when he went to survey the territory last winter. Most of you may remember it in a somewhat different light.

AL HARRIS (B.S., 1966; M.S., 1967; Ph.D., 1975) at JPL has found the slowest rotating asteroid in history.

ALLEN W. HATHEWAY (A.B., 1961) is Professor of Geological Engineering, University of Missouri-Rolla 65401. Dr. Hatheway received the Burwell Award of the Geological Society of America (1981), and accepted the faculty appointment in 1981, moving to Rolla from Cambridge, Massachusetts. He currently serves as Treasurer of the Association of Engineering Geologists and is Colonel, Corps of Engineers, U.S. Army Reserve; assigned as a Mobilization Designee for Deputy Division Engineer, Missouri River Division, Omaha.

HUGH C. HEARD (B. A., 1956; M.A., 1958; Ph.D., 1962) is a group leader in the high-pressure physics group at the

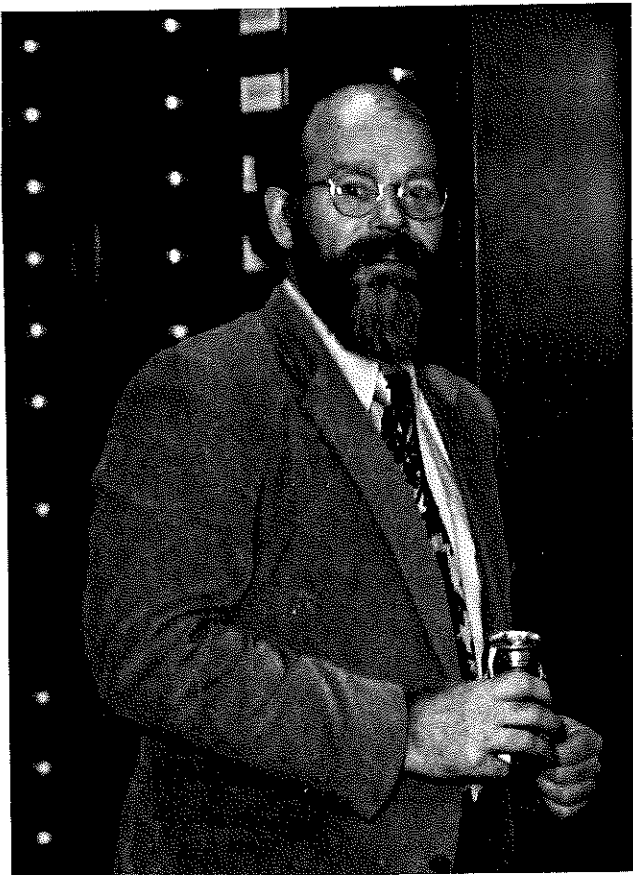
Lawrence Livermore National Laboratory, Earth Sciences Division, P. O. Box 808, Livermore, California 94550. His current work concerns high P-T rheological behavior of rocks, mainly halite, as applied to the problems of storing high-level radioactive wastes. He is also working on rheology of various phases of H<sub>2</sub>O ice at low T, high P with applications to possible plate motion on Jupiter's moons.

HAL HEITMAN (B.S., 1975), is a Paleontologist, Western Region Paleostat Strat Section, Union Oil Company, P. O. Box 6176, Ventura, California 93006. He started with Union as a geologist, "some say switching to paleontology was a demotion. I'm happy though." He married Lynne in 1977, received a masters from USC in 1979, and had a daughter in 1979. He's presently working on a paleoecological study of the Paleocene in Simi, California. With R. G. Douglas he published "Slope and basin benthic forams of the California borderland," in SEPM Special Paper 29, 1979. Responding to our questionnaire, he writes "UCLA has an excellent undergrad program. I was well prepared for my graduate studies. One thing I felt I lacked was a good background in western stratigraphy. For some, the undergrad years will be the only opportunity to learn the local stratigraphy; others, like me, who stay in the area, spend a lot of time catching up. It is encouraging to hear of Ray Ingersoll's appointment to your faculty. Your plans to strengthen your effort in 'soft-rock' geology will, I know, pay off. These are hard times in industry, too. But you still hear of sizeable grants and endowments from resource companies. Encourage your students to get out more! If they're interested in industry, exposure helps in these times of hiring freezes. In addition to GSA and AAPG local conventions, there are monthly society meetings and annual

field trips - I rarely see UCLA students at these."

**BOB HILL** (B.S., 1967; M.S., 1972) is now working for Koch Exploration Company, 2716 Ocean Park Blvd., Suite 3022, Santa Monica, California 90405. He is also a neighbor of **STEVE BAELE** (B.S., 1976).

**LON L. HOOD** (Ph.D., 1979) is a Senior Research Associate at the Lunar & Planetary Laboratory, University of Arizona, Tucson, Arizona 85721. He is continuing research on lunar and meteoritic paleomagnetism, outer planet radiation belts, and selected solar/terrestrial interaction problems.



Bob Horodyski came all the way from Tulane University in New Orleans to join the Alumni Day festivities.

**K. J. HSÜ** (Ph.D., 1954) Professor of Geology, Eidgenössische Technische Hochschule, Sonneggstrasse 5, CH-8006 Zurich, Switzerland responds to our question: "Recently promoted?": "No. (Demoted, no longer Chairman of the Institute.)" He has also retired as President of the International Association of Sedimentologists, but he has accepted the Chairmanship of the Commission on Marine Geology, IUGS. He was awarded Honorary Membership in the SEPM, and he works on South Atlantic paleoceanography and on the Cretaceous/Tertiary boundary event. He has written two books for the layman: *Ein Schiff revolutioniert die Wissenschaft*, Hamburg: Hoffman und Campe Verlag; and *Mediterranean was a Desert*, in press in Princeton University Press; and he edited *Mountain Building Processes* (Academic Press, London). One of Ken's papers, "Studies of Ventura Field, California 1 - Facies Geometry and Genesis of Lower Pliocene Turbidites," is included in a recent AAPG publication on *Deep Water Canyons, Fans, and Facies: Models for Stratigraphic Trap Exploration*.

**LEE HSU** (Ph.D., 1966) gave intense courses on economic mineralogy in the People's Republic of China last fall. He teaches in Reno, Nevada.

## J

**SARA JACOBSON** (M.S., 1978) is a Development Geologist working for Sohio Petroleum (project on Prudhoe Bay) since July 1982. Her address is 2841 Sacramento Street, San Francisco, California 94115. Sara reports that **MARGARET SAUNDERS** (M.S., 1977) is married and living in Virginia, where she is working as a geologist for a utility company there.

**BRUCE M. JAKOSKY** (B.S., 1977, Geophysics and Space Physics), is a

Research Associate for the Laboratory for Atmospheric and Space Physics, Campus Box 392, University of Colorado, Boulder, Colorado 80309. He received his Ph.D. in planetary sciences from Caltech in 1982 and is now working on the climate of Mars (atmospheric and polar water and processes) and the Earth (stratospheric aerosol clouds due to volcanic eruptions).

**HARRISON C. JAMISON** (B.A., 1949) was elected to a five-year term, beginning in 1983, to contribute advisory expertise to the GSA Foundation. He held positions in exploration with Atlantic Richfield in Washington, California, Alaska, and Colorado before being appointed President of ARCO Exploration in Dallas in 1981.



*Harrison Jamison*

**NORMAN C. JANKE** (Ph.D., 1963) is at the Department of Geology of Cal State Sacramento, 6000 "Jay" Street, Sacramento, California 95819, and is also a consulting geologist at 2670 Fair Oaks Blvd., Sacramento, California 95825. He has held recent offices in several of the nine societies of which he is a member. Responsible for establishing the major in Geology at Cal State Sacramento in the late 50's, he has organized courses, scheduled classes, expanded library holdings, acquired equipment and personnel, and with the School of Engineering there, established degree programs in Geological Engineering. He is also a registered Professional Geologist who has performed ore evaluation surveys, petrology of concrete aggregates, geologic hazard evaluation, and detrital mineral analyses, and has published close to twenty papers during his tenure at Sacramento.

**K**

**GREG KALLEMEYN** (Ph.D., 1982) continues here at UCLA as a postdoc with John Wasson.

**TERRY KATO** (Ph.D., 1976) left the oil industry for a faculty position in the CSU system, according to Gary Ernst's rumor network.

**MARVIN KATZ** (M.S., 1981) works as a geologist in Ventura, California.

**W. SCOTT KEYS** (B.A., 1951; M.A., 1953) 11450 Glennon Drive, Lakewood, Colorado 80226, is considering retirement in August of 1983 from his position as Chief, Borehole Geophysics Research Project, Water Resources Division, U.S. Geological Survey, Box 25046 MS403, Denver Federal Center, Denver, Colorado 80225. His recent research has stressed the development and application of borehole geophysics

to radioactive waste disposal and geothermal exploration, work which has produced publications "too numerous to list here." In the past years he spent several weeks lecturing and consulting in Saudi Arabia. For several years, he has had an ongoing project investigating potential sites for radioactive waste repositories in Canada. He writes that he "liked the informal atmosphere and my relationship with Don Carlisle and Ken Watson enhanced the exchange of ideas."

**JOHN C. KIRKPATRICK (B.A., 1942; M.A., 1958)**, 27728 Whirlaway Trail, Evergreen, Colorado 80439, is a Senior Geologist, Valero Producing Company, Suite 310 Writer Square, 1512 Larimer Street, Denver, Colorado 80202.

**JULIUS KLAIN (B.A., 1937)**, 931 Schumacher Drive, Los Angeles, California 90048, writes that he has semi-retired.

**YEHOSHUA (YESHU) KOLODNY (Ph.D., 1969)**, Department of Geology, The Hebrew University, Jerusalem, ISRAEL, completed a two-year term as Department Chairman. His research is centered around the study of oxygen isotopes in phosphates. Yeshu was elected one of three non-American councillors of the Geochemical Society. He visited the U.S. in October of 1982 to give a series of talks at Dallas, UCLA, Caltech, the USGS, and Stanford. Yeshu reports **ARIE NISSENBAUM (Ph.D., 1969)** is the Academic Secretary of the Weizman Institute, "which is a very high administrative job," and that **SAM BEN YAAKOV (Post-doc and Research Associate with Ian Kaplan)** is a Professor at Beer Sheva.

**ANDY KOPANIA (B.S., 1981)**, 6743 Kings Harbor Drive, Rancho Palos Verdes, California 90274, is working on a master's degree at the Department of Geological Sciences, University of

Michigan, Ann Arbor, Michigan 48109. He is studying the structure of the western Wyoming thrust belt and hopes to be finished in May 1983. Andy has accepted a job as an exploration geologist with Champlin Petroleum Company in Englewood, Colorado. He has two manuscripts in preparation: "A Palinspastic Restoration of the Western United States," and "Deformation Consequences of the Impingement of the Northern ID-WY Thrust Belt upon Laramide Uplifts." In response to our questionnaire, Andy writes that he liked the professors' concern for the students' performance in class and for their futures. He also mentions an appreciation for departmental activities such as liquidus and softball and the concern and commitment of non-academic staff such as George Lapins, Ram Alkaly, and Bob Jones.

**DAVE KOSIUR (Ph.D., 1978)**, 514 Pebble Beach Place, Fullerton, California 92635, was promoted to Senior Research Geochemist at Chevron Oil Field Research Company, P.O. Box 446, La Habra, California 90631 in October 1982. He conducts research and development in X-ray techniques for mineral identification and quantification in support of geochemical research and has worked to upgrade the company's X-ray diffraction and fluorescence capabilities. The focus of his current work is quantitative X-ray diffraction, energy-dispersive fluorescence spectrometry, and clay mineral diagenesis. He is a member of the Field Trip Committee for the 1985 International Clay Conference which will be held in Denver.

**WILLIAM N. KREBS (B.S., 1970; Ph.D., U.C. Davis, 1977)**, 1321 East Tenth Avenue, No. 9, Denver, Colorado 80218, is a Senior Paleontologist, Amoco Production Company, Amoco Bldg., Denver, Colorado 80202. He works on the biostratigraphy, preservation, and paleoecology of marine and nonmarine

diatoms. (1) Neogene and Quaternary Lacustrine Diatoms of the Western Snake River Basin, Idaho-Oregon, U.S.A., in *Acta Geologica Academiae Scientiarum Hungaricae* (1982); (2) Late Cretaceous Diatoms from the Pierre Shale, Wyoming, Colorado, and Kansas, in press in the *Journal of Paleontology*; (3) Ecology of Neritic Marine Diatoms, Arthur Harbor, Antarctica, in press in *Micropaleontology*; and (4) Preservation of Neritic Marine Diatoms, Arthur Harbor, Antarctica; and (5) Biostratigraphy of Neogene and Quaternary Non-marine Diatoms, Western Snake River Basin, Idaho-Oregon, both in preparation, are among his most recent publications.

**T. K. KRISHNAN (Ph.D., 1976)** has recently become a Principal in Terracon Geotechnique Ltd., P. O. Box 1048, 5909 - 45th Street, Leduc, Alberta, CANADA T9E 2Y6. Terracon, which is based in Leduc, Alberta, and in West Vancouver, British Columbia, is a consulting engineering company specializing in geology, geotechnical engineering, surface and groundwater hydrology, and mine planning. The consulting firm has an affiliate - Terracon Geotechnique (India) Ltd. T. K. had been consulting for Transalta Utilities on their coal property in the Wabamun area near Edmonton, Alberta. For the academic year 1983/84, T. K. has a temporary position as "Visiting Professor" at the Department of Geological Sciences, McGill University, 3450 University Street, Montreal, Quebec, Canada H3A 2A7, Canada. He will teach structural geology to undergraduates and mineral exploration to graduate students.

**SHINGI KUNIYOSHI (M. A., 1966; Ph.D., 1972)**, 4062 Keith Drive, Campbell, California 95008, is a geologist, Conservation Division, U.S. Geological Survey, 345 Middlefield Road, Menlo Park, California 94025. Shingi's current work is on saline mineral resource evaluation of playas in California and

Nevada (particularly Searles Lake and Clayton Valley). Dr. Hitoshi Sakai (an ex-UCLA post-doc) joined Shingi in preparation of the paper "Sulfur and carbon isotopes in phosphorites of the Phosphoria Formation, Idaho which will be published in the *Geochemical Journal*. He reports that he saw Dr. Seki and Dr. Sakai at LOUIE LIOU's (Ph.D., 1970) home last summer.



**MARY LYNN LANDES, DDS (B.S., 1971)** who became a dentist in 1977, recently moved from Gallup, New Mexico, to Pennsylvania (RD 5, Box 396, Tunkhannock, Pennsylvania 18657). "After five years in the Indian Health Service, I am back among the strange, unfamiliar pale faces of Anglos, and with East-coast people, too! **MARTY WESTERBROOK (B.S., 1971)** is at the University of Washington, Seattle (22022 Fourth Place W, Bothell, Washington 98011) in his last two years of training to become an oral surgeon." She writes, "I was last there ten years ago, and one of the best aspects was that crustal expression of a late Mesozoic Benioff zone, Dr. Ernst. Did you rock folks ever decide whether granite is igneous, metamorphic, or sedimentary?? I still wonder about that. How did you ever get my address?"

**ROBERT A. LARSON (B.S., 1979)**, 4446 Atoll Avenue, Sherman Oaks, California 91423, stops by the Department quite frequently to use the library in his position as Staff Engineering Geologist, James Slosson & Associates, 14046 Oxnard Street, Van Nuys, California 91401. He has been assigned to work on housing tract development in the Pacific Palisades area, California, and regional oil and gas analysis, Arizona. He co-authored

"Landslides and Trace Development: A Case Analysis of a Steep, Unstable Terrain," with P. L. McClay *et al.*, Abstracts for the GSA Cordilleran Section Meeting, 1982. He writes: "The field program was what I liked best of all while I was attending UCLA. I think that additional, semi-informal weekend or day field trips led by graduate students using private vehicles would enhance the field program. The Department does a good job at covering the basics. I feel that three areas need improvement: one, administrative, and the other two, academic in nature. Classes taught only once a year, such as Mineral Deposits, should not be cancelled or changed to another quarter. When a class is scheduled, the student plans his or her class program a year in advance in order to take a particular class. If the class is cancelled (as happened to me), the student has no choice but to take another class that may not fit into the student's academic or career goals. The E&SS Department's teaching emphasis is directed toward the fundamental sciences rather than toward applications. While I do not disagree with the Department's goals, I felt a distinct lack of career counseling. The working conditions of an industrial career have a lot to do with a person's desire to pursue that career. Perhaps a one-hour-a-week seminar, similar to ESS190, could be taught by industrial representatives. This program could focus on industrial careers in earth science. Careers Day is not enough. The E&SS Department provides a degree with Engineering Geology as the specialty. Additional *geology* courses should be added to that curriculum. Courses to be added could include Engineering Seismology, Process-Oriented Geomorphology, Hydrogeology, Quaternary Dating Methods, Engineering Geology of the Los Angeles area."

TIMOTHY LATIOLAIT (B.S., 1975), 7136 Alvern Street, Apt. D., Los Angeles, California 90045, is working as an Engineering Geologist, Geotechnical Consultants, Inc., 2001 E. Fourth Street, Suite 102, Santa Ana, California 92705. He became a California Registered Geologist and a Certified Engineering Geologist in August 1982 and is a Member of the Association of Engineering Geologists and the Geological Society of America. He reports that ED FALL (B.S., 1976) is also an Engineering Geologist for Geotechnical Consultants, Inc. (in the Burbank office) and that he also became a Registered Geologist and Certified Engineering Geologist in 1982. BRIAN DICKER (B.S., 1976) recently passed the bar exam to become an attorney at law in California.

ERNEST P. LEDTERMAN (B.A., 1939) retired in 1975 after 35 years as an engineer and manager with Pacific Telephone. Now he travels a lot "(105,000 miles since retirement) - all 48 continental states, all Canadian Provinces, and most Mexican states, plus Europe, Australia, and New Zealand. I make learned comments about the geology of the roadcuts through which we travel: e.g., 'That appears to be rock.'...I could have told him in 1939 that he'd never retire (H. H. SULLWOLD, B.A., 1939 in your 80-81 Newsletter)." What did you like about the Department? "Its small size and how well the students and faculty knew each other." His home address: 5867 Soledad Mt. Rd., La Jolla, California 92037.

WILLY LEE (Ph.D., 1967) busily studies earthquake mechanisms at Menlo Park's USGS.

"LOUIE" LIU (Ph.D., 1970) left Stanford temporarily for research on ophiolites in the People's Republic of China.

RICHARD E. LONSDALE (B.A., 1949; Ph.D., Geography, Syracuse, 1960), is

a Professor in the Department of Geography, University of Nebraska, Lincoln, Nebraska 68588. (Home address: 5951 Garfield Street, Lincoln, Nebraska 68506). He is the author or co-author of five books on rural development and rural service delivery, with emphasis on the Australian Outback, Siberia, and Amazonia. Richard writes: "... (1946-1949, ancient history) LIKED BEST: Solid, demanding, well-structured program; field work. LIKED LEAST: Distant relationship between staff and students; faculty vacated Department by 2:00 p.m.; little interest in students as individuals."

**BOB LUNDSTROM** (B.A., 1960), 31769 Bedfordhurst Ct., Westlake Village, California 91361, is Vice-President of the Wilkinson Company, which specializes in precious metal alloys for electronics, medical and dental fields. He writes, "Clarence Hall never liked **DICK STERNBERG** (B.A., 1958), **PETER TRESSELT** (M.A., 1960) and me as students because we laughed too much out in the field. I am sure to Clarence's amazement we are all doing very well!"



**ROBERT MACDONALD** (M.S., 1977), 2470 Paloma Street, Pasadena, California 91104, is a geologist with the Minerals Management Service (formerly the USGS Conservation Division), Pacific Outer Continental Shelf Region, 1340 West Sixth Street, Los Angeles, California 90017. He estimates the value of offshore oil for lease sales of offshore tracts (California, Oregon, and Washington). Robert reports that **ORRIN W. GILBERT** (B.A., 1944) is a supervisory petroleum engineer in the Offshore Field Operations of the Minerals Management Service in the Los Angeles office. He also adds that: "I appreciated the competent faculty and

their willingness to give of their time and knowledge to the students."

**KAYE ROLLAND McCOWN** (B.A., 1955), 23101 Cass Avenue, Woodland Hills, California 91364, is a consultant at the above address, with drilling programs in the Castaic and Newhall area, two oil wells in the Tapia Oil Field and ten planned development wells. "I was in the Department during our 'glory days' when the UCLA Geology Department was Number 1! I hope the Department can attain some of that greatness once again." (Ed. note: Kaye should take special note of the American Council on Education's ranking of UCLA and the Department.)

**THANE H. McCULLOH** (Ph.D., 1952) 7136 Aberdeen Avenue, Dallas, Texas 75230, is a Senior Research Associate with Mobil Research and Development Corp., Exploration and Production Division, P. O. Box 345100, Dallas, Texas 75234. He resigned his position with the USGS in October of 1982 to assume this position where he is currently researching sedimentary basin thermal histories, burial diagenesis, petrophysics of clastic sedimentary rocks, source rock maturation, and basin analytical procedures.

"Your present plans and goals are a good beginning! I hope some day that the Department...can again include 'GEOLOGY' in the official name."

**MIKE McCURRY** (Ph.D., 1983) is an Assistant Professor at the University of New Mexico, Las Cruces.

**MARY McNEIL** (M.A., 1963) retired from a position as a senior geologist for the Pasadena firm of Jacobs Engineering, and will be a consultant. Her latest publication was "Panasqueira - the largest mine in Portugal," in *World Mining* December, 1982, and she has completed course work for a Ph.D. in

Geography (Geomorphology). Mary found that her "job as a researcher in palynology with Dr. Axelrod and lab work on phase relationships between gypsum and anhydrite under Dr. Kennedy" were the best part of her tenure in the Department. Her current address is c/o Jordan Realty, 1906 Midvale, Los Angeles, California 90025.

CAROL MANKIEWICZ (B.S., 1971; M.S., 1975) and husband CARL MENDELSON (Ph.D., 1981) are living in Wisconsin. Carol is a graduate student in the Department of Geology and Geophysics, University of Wisconsin, Madison, Wisconsin 53706, and Carl is on the faculty of the Department of Geology, Beloit College, Beloit, Wisconsin 53511. "Although I have not yet chosen a thesis, it will be in sedimentology, probably carbonates. Carl Mendelson and I will be jointly teaching a field methods course this summer at Beloit College. Last summer (1982) Carl and I (and 23 other geology professors and students) spent 2 months in Samoa, Tonga, and New Zealand studying the geology. Last semester I spent 8 days in the Guadalupe and Sacramento Mountains and this semester will include 10 days on the Florida reefs and 16 days in the Appalachians." About the Department Carol comments: "Best: exposure to a variety of subjects, speakers, and equipment. Needs: more stress in 'soft-rock' department - the imbalance in the Department is too great, which is especially disadvantageous to the undergraduate."

KENNETH A. MARDER (B.A., 1958) 2601 Roscomare Road, Los Angeles, California 90077, is a partner in the law firm of Marder and Marder, Attorneys, 522 S. Sepulveda Blvd., No. 203, Los Angeles, California 90049. He received his J.D. from Southwestern University in 1973.

K. E. MEISLING (B.S., 1977) joined P. M. Sadler, J. E. Foster, and R. J. Weldon in producing Field Trip 6, "Geologic Excursions in the Transverse Ranges," for the Cordilleran Section GSA Meeting in Anaheim, California, 1982.

CARL V. MENDELSON (A.B., 1976, Biology; Ph.D., 1981, Geology) is an Assistant Professor of Geology at the Department of Geology, Beloit College, Beloit, Wisconsin 53511, where he is currently studying organic-walled microfossils from the Upper Ordovician Maquoketa Formation, eastern Iowa. In 1982 he turned out two publications in the *Journal of Paleontology*, one on Precambrian microfossils (with J. W. Schopf) and one on Recent agglutinated foraminifers. Carl and wife, CAROL MANKIEWICZ (B.S., 1971; M.S., 1975), will be teaching geologic field methods at Beloit in the summer of 1983. "We will do our best to remember how to use a Brunton." Carl comments that what he liked best about the Department was the support staff "(Lapins *et al.*)" and the library. He feels the Department needs to improve interaction among different floors, with a "certain amount of mixing of graduate students, e.g., geophysicist and paleontologist!?" and suggests a Friday social hour at the library to introduce new acquisitions.

CALVIN MILLER (Ph.D., 1977) is at Vanderbilt University where he is an Assistant Professor. His research involves Trondjemitic plutonism in the Blue Ridge; tectonic controls of crustal anatexis, particularly in the Cordilleran; controls of chemical fractionation in high-Si magmas on mineralogy and significance of peraluminous granites (Old Woman Mountains, Mojave Desert); and on fractionation in high-Si magmas. He published a paper in *The Canadian Mineralogist* with SKIP STODDARD (Ph.D., 1976), another with DAVE (Duck) MITTFEHLDT (Ph.D., 1978)



in *Geology*, and one on the tectonics of the Colorado River region in *Geochimica et Cosmochimica Acta*. Calvin liked the stimulating atmosphere (established by both faculty and grad students) and the good, accessible, functioning facilities at UCLA. He feels we could use more breadth in the Department, particularly in "mainstream" geology, with less segregation into specialized enclaves. Calvin's address is 6028, Sta. B, Vanderbilt University, Nashville, Tennessee 37235.

DAVID MILLER (Ph.D., 1978) is a geologist for the U.S. Geological Survey, MS-75, 345 Middlefield Road, Menlo Park, California 94025. He writes: "I seem to have found my niche in geology - promoting studies by students from various institutions and editing and organizing other researchers' studies!" He was the lead editor on *GSA Memoir 157*, "Tectonic and Stratigraphic Studies in the Eastern Great Basin;" and was editor of a chapter on the Laramide in the *GSA Decade of North American Geology* series. To the "what did you like best/least about the Department" questionnaire, he responds: "Best: high quality of research by most faculty. Needs improvement: (1) faculty-student communication (field trips, talks - faculty research on a general level, get-togethers focused on specialties would be good ways to improve this); (2) factionalization of the Department - more broad-brush types are needed to glue the various highly specialized faculty together and to present interesting, well-rounded courses. Particularly lacking in the mid-70's were stratigrapher-depositional systems and regional tectonics. Basically, the negative atmosphere needs to be changed, and long-lasting changes must be generated by the faculty and staff. Put energy and interest into the Department and the students will respond. When UCLA has a positive atmosphere, you may even find more alumni donating and

recommending the school to prospective students."

HOLMES O. MILLER (B.A., 1932), 2419 Cedar, Bakersfield, California 93301, retired in 1975 and is enjoying it. He was a Shell Oil Company Petroleum Engineer from 1934-1946, worked for Texaco from 1947 to 1953, for Intex Oil Company as a reservoir-evaluation engineer from 1953-1968, and was a consulting petroleum engineer until his retirement. He now devotes most of his time to pursuing his hobby as a nature and wildlife photographer. "You have certainly grown: 27 faculty members! When I started on the old Vermont campus and then moved to the Westwood campus, there were 5 faculty of the Geology Department: W. J. Miller (no relation), Soper, Whitman, Murdoch, and U. S. Grant. In those days we did our field mapping in the Santa Monica Mountains and Hollywood Hills, not two miles from the campus - and the Bristlecone Pines and the White Mountains were unknown."

RICK MILLER (M.S., 1967; Ph.D., 1975) was promoted to Professor of Geology at the Department of Geological Sciences, San Diego State University, San Diego, California 92182. He's working on the Lower Paleozoic rocks and conodonts of the southern Great Basin and the Paleozoic of Baja with support from the NSF. He has published "lots of papers on conodonts and stratigraphic revisions, but who reads about the Paleozoic anyway?" Generous fellow, Rick writes: "Would you like some extra geology majors? We have hundreds and would be happy to spare a few!"

DAVE MITTLEFEHLDT (Ph.D., 1978) and NURIT HILDEBRAND MITTLEFEHLDT (Ph.D., 1978) at the Ben-Gurion University of the Negev, Israel, have a second son.

JOHNNIE MOORE (M.S., 1973; Ph.D., 1976) another of Clem Nelson's ex-students, teaches at the University of Montana.

## N

**BILL NEILL (B.S., 1970)** 1219 N. State College Blvd., No. 226, Anaheim, California 92806, is a research petroleum engineer for Union Oil Research Center, P. O. Box 76, Brea, California 92621. He obtained a M.S. in Geology from Stanford in 1975 and went to work for Texaco in Los Angeles from 1975 to 1981. He is now running computer simulation of enhanced recovery projects involving injection of surfactant chemical. His main interest is "steam flooding." Bill is active in the Sierra Club, where he produced and directed a 42-minute, 16-mm film on the problems of wild burros in the American deserts.

**B. BRICK ROBINSON (B.A., 1952; M.A., 1956)** reports: "LEWIS NELSON (B.A., 1952) was formerly with the Ohio Oil Company in California and Louisiana and more recently was the Exploration Manager for Oxy Petroleum, Inc., in Houston, Texas. Since leaving Oxy, Lew has become an officer in Banner Petroleum, 3000 S. Post Oak Road, Suite 1600, Houston, Texas 77056.

**NEIL L. NICKLE (M.S., 1968)**, 3663 Urquidez Avenue, Glendale, California 91208, is a technical manager for Flight Projects Planning Office, Jet Propulsion Laboratories, 4800 Oak Grove Drive, Pasadena, California 91109. He is planning the initiation of a "Mars Geoscience Climatology Orbiter" Mission in 1988.

**ROBERT M. NORRIS (A.B., 1943; M.A., 1949)**, is a Professor of Geology, Department of Geological Sciences, University of California, Santa Barbara,

California 93106. He just finished another sabbatical at the New Zealand Oceanographic Institute in Wellington. "It is difficult to face the routine paperwork now that I'm back, but I wouldn't knock sabbaticals just on that account." He received the Neil Miner Award from the National Association of Geology Teachers at Cincinnati in 1981, "my moment of glory." (Editor's note: the Department field trip to Mitchell Caverns some years back happened upon a magnificently well-informed and very attractive park ranger, who parried difficult questions about the geology of the area with surprising ease. When asked why she was so knowledgeable about geology, we discovered that she was the daughter of one Robert M. Norris, Professor of Geology at Santa Barbara. Another "moment of glory" for a fine teacher.) Robert Norris liked the small friendly Department when he was here and the "good rapport between students and faculty. Excellent teachers like Bob Webb, Cord Durrell, and Bill Putnam; crusty old devils, always worth listening to, such as Jim Gilluly; and unforgettable characters like U. S. Grant and Pat Quayle. I think maintaining a close, concerned and friendly relationship with the undergrads is most important. We try at Santa Barbara, and I know UCLA does too - with guys like Clem Nelson - (but) it is not always easy." A note to Clarence Hall: "On Tick Canyon: I've been trying since 1961 to get it for the Univ. This isn't bragging because my efforts bore little or no fruit until others got into the act. - Bob."

## O

**DUGAN O'KEEFE (M.S., 1970; Ph.D., 1977)** has big responsibilities at TRW while studying the big impact which ended the Cretaceous.

ROBERT R. OLSEN (B.S., 1968), 6818 Winterberry Circle, Wichita, Kansas 67226, received his M.S. from the University of Oregon in 1972, and since Fall 1977 has been a consulting petroleum geologist working for Range Oil Company, one of the largest independents in Kansas. He watched 46 wells last year. He also does a certain amount of prospecting: Range has drilled 7 wildcats on his prospects. "This has resulted in no great depletion of reserves since all were dry! However, since the success ratio for wildcats in Kansas is about one in eight, I regard my next prospect as a dead cinch. And, yes, Kansas *is* the last place on Earth I would have expected to wind up!"

MARK GREGORY OLSON (B.S., 1980, Geophysics), 5555 Amesbury, No. 1416, Dallas, Texas 75206, is a geophysicist with Mobil Exploration and Producing Services, Inc., P. O. Box 900, Dallas, Texas 75221. He was recently transferred to the *M/V Mobil Search* (seismic vessel) where he will function as the seismologist onboard. He is a member of the Society of Exploration Geophysicists, the Dallas Geophysical Society, and is Advertising Director for the Dallas Geophysical Society. He reports that he recently met GARY ISHIBASHI (B.S., 1979), who is also living and working in Dallas. Gary's response to our questionnaire was the following: "I think the Department needs to be more aware of what is going on in the petroleum industry. This is especially the case for exploration geophysics."

**P**

GARY A. PARKISON (B.S., 1973), 958 Antelope NE, Albuquerque, New Mexico 87122, received his M.S. from Berkeley in 1976. Since graduation he has worked for International Minerals &

Chemicals Corp.; Woodward-Clyde Consultants; Energy Fuels Nuclear, Inc.; DEPCO, Inc., Minerals Division; and is now a district geologist for NICOR Mineral Ventures, 2659-G Pan American Fwy NE, Albuquerque, New Mexico 87107. What he liked best were "the small class size and the 'caring' attitude of the faculty. In addition, the rigorous field mapping classes have been most beneficial in my career."

DAVE PASTA (B.A., 1957; M.A., 1958), 4656 S. Niagara Ct., Englewood, Colorado 80111, is the geological manager for Texaco, Inc., Denver, Colorado. His exploration group recently moved to the new Texaco Bldg. in the Denver Technological Center where his current work involves exploration in the Rocky Mountain region. He "thoroughly enjoyed the strong field geology program at UCLA. This provided a broad 'hands-on' base from which to understand most aspects of surface and subsurface geology and geophysics."

JAMES PAULL (B.A., 1932; M.A., 1940), 12631 Califa Street, North Hollywood, California 91607, retired from Cal-Trans, where he had been a district hydrologist for L.A., Orange, and Ventura Counties. After leaving UCLA, he was a Captain in the 8th AF during WWII. USC then claimed some of his attention while he acquired an additional B.S. (1953) and M.S. (1956) in Civil Engineering there. He is a life member of the American Society of Civil Engineers and the American Geophysical Union, recently terminated membership in the American Meteorological Society, and belongs to the Professional Engineers California Gov't. (PECG). He met JEROME O'BRIEN (B.A., 1932) when they had their 50th year reunion at UCLA. "Then the upper classes were small therefore resulting in a better learning procedure. How large are the upper classes today?"

JOE POLOVINA (M.S., 1980) 4812 Summer Tree Lane, Apt. A., Bakersfield, California 93309, is a geologist with Gulf Oil Exploration and Production Company, P. O. Box 1392, Bakersfield, California 93302, doing exploration for oil and gas in Oregon and Washington.

EDWARD D. PITTMAN (B.S., 1956), AAPG Distinguished Lecturer (1978-79) produced a 41-minute slide and tape series, "Diagenesis - Key to Pore Geometry and Reservoir Potential of Sandstones" (1979) for the AAPG.

BOB PRESLEY (Ph.D., 1969) is a Professor of Geology at the Oceanography Department, Texas A & M, College Station, Texas 77843. He is continuing work on the chemistry of Gulf of Mexico sediments and has recently published papers in *Geochimica Cosmochimica Acta*, *Environmental Geology*, and *Geophysical Research Letters*. Bobby Jo's good sleuthing turned up ANDY LINK, who is with Home Petroleum in Houston, and MATT MATHEWS from Gulf Oil and Pittsburgh. He responds to our questionnaire with the following: "The thing I liked best was the overall academic atmosphere. Most of the students and most of the faculty were interested in and wanted to talk about science. We had our fun times, and they were great, but we were also serious about learning. I haven't seen the serious side of very many students since I left UCLA! I give credit for many of the good things that happened to me at UCLA to my advisor and friend, Ian Kaplan. As long as UCLA has people like Ian, and they have several, it will be great! I hated the Tick Canyon field course!"

EDWARD F. PRUSS (B.A., 1968), his wife, Jan, and son and daughter, live at 7797 Baseline Road, Boulder, Colorado 80303. Ed is a geologist with Enstar Petroleum, Inc., and mixes busi-

ness with pleasure while darting around the Rockies in a small plane.



MICHAEL RABINOWITZ (M.S., 1971; Ph.D., 1974), has been an Associate in Psychiatry at the Harvard Medical School in Boston since 1980 (address: G308 Children's Hospital, Boston, Massachusetts 02115). His geological work involves environmental geochemistry of heavy metals, clinical investigations of metal metabolism, and EPA consulting. He has a paper in Volume 216, No. 1429 (1982) of *Science*.

BARRY RALEIGH (Ph.D., 1963), John Christie's first graduated Ph.D., now directs the Lamont-Doherty Geological Observatory.

JAMES CARTER ROBERTSON (B.A., 1960), 6908 Bret Harte Drive, San Jose, California 95120, has lived in San Jose for eleven years and is working for the GTE Directory Company in advertising sales for the Santa Clara Division. Telecommunications classes occupy his free time. He writes he "enjoyed the association with fellow students most. At graduation there were extremely few jobs available. Department was unable to help in this matter. Went to work for Richfield Oil as a representative. Left there and went to work for Bell Brand Foods. Have now worked for GTE Directory Company since 1967 and will probably remain here. We like the Bay Area and would not choose at this time to live anywhere else. Did enjoy hearing news of others."

B. BRICK ("BOB") ROBINSON (B.A., 1952; M.A., 1956) has been named Vice President of the newly organized Western Exploration (exploration and production) Area of Cities Service Oil and Gas Corporation, the domestic subsidi-

ary of Occidental Petroleum Corporation. Prior to the recent reorganization of Oxy's domestic operations, Robinson was Assistant Operations Manager of Oxy's headquarters in Bakersfield. He had joined Oxy's Houston Division in 1972 after 16 years working with Shell in various exploration, production, and research assignments in California, Texas, and Louisiana. Address: 5000 Stockdale Hwy., Bakersfield, California 93309.

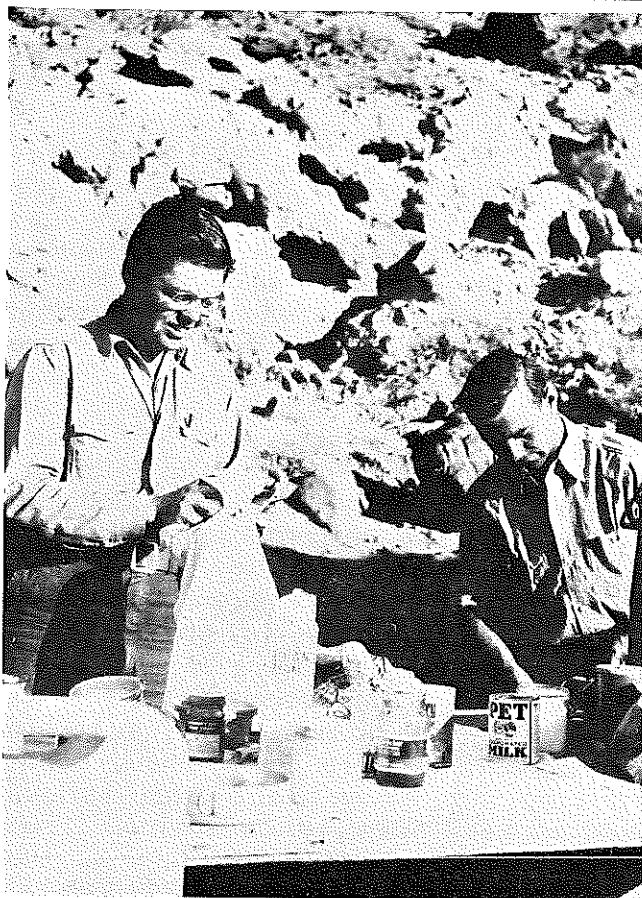
JERI LYNN RODGERS (nee Cameron; M.S., 1980) works for Arco in Houston, Texas, but may return to graduate school.

GARY D. ROSENBERG (Ph.D., 1972) is an Assistant Professor in the Geology Department - IUPUI, 925 W. Michigan Street, Indianapolis, Indiana 46202. Gary is researching chemical/structural rhythms in fossil brachs and the effects of spaceflight on Ca physiology of living mammals. He tells us that E. REED WICANDER (Ph.D., 1973) is in the Department of Geology, Central Michigan University, Mt. Pleasant, Michigan.

DONALD C. ROSS (Ph.D., 1952) submitted nary a word on his own activities but sent the following photograph and comments: "When I noted that next year's Newsletter would include 'intriguing photographs,' I remembered the enclosed photo. The humble beginnings of 'academician' John Crowell and oil company president Harold Lian, shown doing dishes in the Muddy Mountains in 1950, certainly fulfills the 'log cabin syndrome.'"

JIM C. ROTH (B.S., 1956) has been recently promoted from Exploration Manager to Vice President of Exploration, MCO Resources, Inc., 10880 Wilshire Blvd., Los Angeles, California 90024, and is presently directing MCR's oil and gas exploration and land activities both

foreign and domestic. MCR was previously known as McCulloch Oil Corp. Adding his comments to the departmental critique, he writes: "There was more emphasis on teaching by the staff, and the curricula had a predominate emphasis on soft-rock studies which could lead to employment in industry as opposed to teaching." Home address: 24749 Vantage Pt. Ter., Malibu, California 90267.



Dishwashers John Crowell and Harold Lian, ca. 1940. Photo by Donald C. Ross.

N. R. "DICK" ROUSSELOT (B.A., 1950), 4723 Spring Meadow Lane, No. 3, Midland, Texas 79701, is a partner in the Subsurface Library, a private subscription subsurface geological library. He notes: "The Newsletter mentioned 'beefing-up' the Petroleum

Geology aspect' - good move - in particular since California is again in the limelight of the petroleum frontier inspite of governmental problems."

JOHN RUNDLE (Ph.D., 1976) is organizing a major geophysical study of Long Valley, California, while at Sandia Labs. He and Marie are enjoying their first child.



MARK W. SANDSTROM (M.S., 1977, Geochemistry) has recently taken up the position of marine geochemist at the Australian Institute of Marine Science, P.M.B. 3, Townsville, QLD, 4810 AUSTRALIA, where his research interests are the biogeochemistry of organic phosphorus in the Great Barrier Reef environment.

DON SCANLIN (M.S., 1958), 540 Del Oro Drive, Ojai, California 93023, President, Scanlin Enterprises, Inc., a real estate development and investment company, writes that he is still active in geology as an investor and land owner of some marginal California oil production. "I enjoyed reading your latest newsletter, which made me more proud than ever to be a graduate of such a fine school." (Ed. note: we hope he reads the section on our national ranking with care!)

SUSAN SHOEMAKER (B.S., 1981), 7995 E. Mississippi Ave, No. C-2, Denver, Colorado 80231, is a geophysicist in the Rocky Mountain oil and gas exploration group of the Anschutz Corp., 555 Seventeenth St., 2400 Anaconda Twr., Denver, Colorado 80202. "Presently I am looking for a lookalike to the Anschutz Ranch East field in the Utah-Wyoming-Idaho Overthrust Belt so I can retire on my override. Actually, I am continuing my education through exten-

sion courses at the Colorado School of Mines and the University of Colorado, Denver, by taking more math, geophysics, and computer classes." A good detective, she writes that: (1) KATA MCCARVILLE WEBER (B.S., 1978), 5603 Chaparral Drive, Laramie, Wyoming 82070, is teaching computer classes at the University of Wyoming and is a geo-computer specialist for a consulting firm in Laramie; that (2) JEANETTE NIELSEN (B.S., 1980) of Nielsen Resources, a family corporation, is finishing up a M.S. at the Colorado School of Mines; and that (3) BOB TUCKER (B.S., 1978) can be found at Amoco Production Company, 1670 Broadway, Denver, Colorado 80202. For her part, Susan liked "Playing softball! Next game ought to have three kegs!" (Ed. note: It did, and the grad. studs. won.)

RICHARD SLADE (B.A., 1966) went on to USC to receive a M.S. in Engineering Geology in 1975. He is now an associate and Senior Hydrogeologist at Geotechnical Consultants, Inc., in Burbank, California. His current work includes ground water resource development, well siting and design, ground water monitoring, ground water contamination studies, and designs for monitoring networks at sanitary landfills. Home address: 4950 Bellaire Avenue, North Hollywood, California 91607.

JAMES A. SLAVIN (Ph.D., 1982) is a NAS/NRC Resident Research Associate (space plasma physics) at Jet Propulsion Laboratory, Mail Stop 169-506, California Institute of Technology, 4800 Oak Grove Drive, Pasadena, California 91109. The best aspect of the Department, he feels, was the interdisciplinary atmosphere, but he thinks that "plasma physics courses from the Physics and EE Departments should be included in the GSP grad. requirements."

WARREN B. SMITH (B.A., 1950), 2617 Mountain Pine Drive, La Crescenta, California 91213, is a technical specialist in analytical chemistry at McDonnell Douglas Astronautics Company in Huntington Beach, California 92647. He has been managing chemistry laboratories in Santa Monica and Huntington Beach for 32 years and is "still at it." He has two children and four grandchildren. "All of us are healthy and reasonably happy - all have adequate means. I and my wife became born-again Christians about ten years ago, and the Lord has taken very good care of us ever since!...Thoroughly enjoyed geological studies under Popenoe and Crowell - it was more interesting than chemistry at the time, but that was long ago, and now I'm a chemist!"

FRANK "SPEEDO" SPEAR (Ph.D., 1976), at MIT, has been publishing up at storm on the metamorphic geology of New England.

MICHAEL P. STARK (B.S., 1970, M.S., Iowa State, 1973) is Chief Geologist, Occidental of Britain; 16 Palace Street, London, S.W.1E 5BQ, UNITED KINGDOM. He has been in the U.K. since September of 1980 (was previously with Oxy in Bakersfield) and is currently working with Oxy's exploration efforts in the North Sea. The best aspect of the Department, he feels, was the concentration on field work.

GLEN R. STEWART (M.S., 1978; Ph.D., G&SP, 1982) is a National Research Council Associate at NASA Ames Research Center, Mail Stop 245-3, Moffett Field, California 95035. He is developing dynamical models of Saturn's rings in an effort to understand the complex record-groove structure observed by *Voyager I* and *II* and has recently co-authored a review paper on dynamical processes in Saturn's rings with Drs. D. N. C. Lin and P. Bodenheimer of U.C. Santa Cruz.

SAM STEWART (B.S., 1938) has joined Petro-Canada, Box 2844 Calgary, Alberta, CANADA T2P 3E3, as Senior Vice-President.

J. THIEL SULLIVAN (B.S., 1955) is Vice-President and Partner in Broz, Allen & Hamilton, Inc., 4330 Eastwest Highway, Bethesda, Maryland 20814. His work involves the requirements analysis, design, development, and implementation of national-level intelligence systems and has resulted in many publications "but not in the geological sciences." He liked the "quality and availability of the professors. Say hello to Clem Nelson and Ken Watson! This was the first issue of the Departmental Newsletter I ever received."

HAROLD H. SULLWOLD (B.A., 1939; M.A., 1940; Ph.D., 1959). Ken Watson reports that Two of Sully's papers - "Turbidites and Oil Exploration" and "Tarzana Fan, Deep Submarine Fan of Late Miocene Age, Los Angeles, County, California" - are included in a recent AAPG publication on *Deep Water Canyons, Fans, and Facies: Models for Stratigraphic Trap Exploration*.

STEVEN S. SZNYTER (B.S., 1963) is a Senior Professional Services Analyst, Cal State Program, of Control Data Corporation, 8616 La Tijera Blvd., Los Angeles, California 90045.



JERRY TREIMAN (B.S., 1972), 23121 Dolorosa Street, Woodland Hills, California 91367, is still working for the California Division of Mines and Geology, 107 S. Broadway, Rm. 1065, Los Angeles, California 90012. He is a Registered Geologist and Certified Engineering Geologist. Jerry is working on his M.S. and is doing basic geologic mapping along the San Gabriel fault in

the Saugus area. He works with a large group of UCLA alums: CLIFF GRAY (B.S., 1949), JIM KAHLE (M.S., 1966), ED KIESSLING (M.A., 1958), AL BARROWS (Ph.D., 1969), HAL WEBER (B.A., 1952; M.A., 1956), DICK SAUL (M.A., 1957), RICHARD GREENWOOD (B.S., 1974), and SIANG TAN (M.S., 1972). Jerry thought the Department's greatest assets during the early 1970's were, "Its strong field geology program, excellent faculty and courses for the fundamentals and an up-to-date, complete library. I felt the Department was weak in some of the applied courses such as were available in the Cal State system (such as groundwater or air-photo interpretation)."

BENNIE W. TROXEL (B.A., 1950; M.S., 1958) 2961 Redwood Rd., Napa, California 94558 is lecturing part time at U.C. Davis, doing some "minimal" consulting and some independent research in Death Valley (since 1974). After 25 years with the California Division of Mines and Geology and 4 years as the science editor for the Geol. Soc. America, he decided to retire in 1976 to spend two-thirds of his time between Christmas and April 1 in Death Valley conducting research and advising students. He also leads field trips each year there and to the Grand Canyon. His own research in Death Valley covers Precambrian stratigraphy, volcanism, Tertiary and Quaternary tectonics, and he worked on the Quaternary Atlas of Southern California for the USGS. In addition, he writes, "By the time this is published, I will be the proud junior author (with L. A. Wright) of two 7-1/2-minute quadrangles (north half of Confidence Halls quad in Death Valley where Levi F. Noble recognized 'chaos')." A long list of kudos ends his letter: "... (the) Heavy program on field investigations! I am grateful to John Crowell and Jim Gilluly for getting me interested in structural geology,

Don Carlisle and George Tunell in ore deposits, Clem Nelson in stratigraphy, Bill Putnam in geomorphology, Cord Durrell in igneous rocks, Ken Watson in metamorphic rocks, and all the others who helped broaden my interests. Hooray for general geology! Who needs a Ph.D. with help like that?! You still have a great team, and I'm proud of my *alma mater*."



STEVEN USDANSKY (B.S., Geology and Mathematics, 1976) is an Assistant Professor at the Department of Geology, The University of Alabama, P. O. Box 1945, University, Alabama 35486. His current research projects include further work on the topological properties of petrogenetic grids, studies of the Precambrian basement rocks near Gunnison, Colorado, and investigations of the geology of the Northern Piedmont of Alabama. He is also in the process of developing some programs for a microcomputer to estimate chemical analyses of igneous and metamorphic rocks from modal data. The Fall 1981 AGU meeting provided a "mini-reunion" for Steven, BRAD ERSKINE (B.S., 1976) and ANDY KRONENBERG (B.S., 1977), fellow members of summerfield, 1976. Steven "really appreciated the fact that after only one year of geology courses I was able to get into graduate school and not have any deficiencies in my undergraduate course work (except the introductory physical and historical courses, which Clem graciously allowed me to skip and I never had to take). I see that since my graduation, the requirements were changed to make getting all the necessary geology courses in one year virtually impossible."



## V

**JOHN H. (JACK) VAN AMRINGE** (B.A., 1956; M.A., 1957). 1455 Old House Road, Pasadena, California 91107, is the Exploration Manager for the Western Region, Union Oil Company of California, 225 S. Lake Avenue, Pasadena, California 91101. He moved back from Lafayette, Louisiana, to L.A. in 1979 and is handling oil exploration in California, Nevada, Oregon, Washington, and Alaska. He replaced **GEORGE FEISTER** (B.A., 1941), who retired that year. Union's Western Region headquarters were moved to Pasadena in October of 1982, "gratefully" much closer to home for Jack. Jack's comments: "During the period 1954-57 when I attended the Department had a top-notch staff most of whom have since distinguished themselves in their fields. The orientation was toward preparing the students for practical applications of geology in the business and academic climate of the times. I've always been grateful for a strong background in *field work* and emphasis on fundamentals."

## W

**HOLLY. C. WAGNER** (M.A., 1947) 1135 Lisa Lane, Los Altos, California 94022, sent a nice, newsy letter following his Alumni Day 83 visit to the Department:

"Dear Departmental Friends:

I've been remiss with news to you old friends for several years, so I'll try to bring you up to date in one fell swoop. My wife, Leslie, and I were bitten by the travel bug almost as soon as I retired from the U.S.G.S. in December 1975. In 1976 we went to Africa to visit a cousin working in Ghana (saw

metamorphic and igneous rocks mostly and some Old Red Sandstone), toured South Africa (nuclear research plant near Pretoria, gold mines at Johannesburg, diamond mines at Kimberly), Rhodesia (Victoria Falls), Kenya and Tanzania (wild life safari, Great Rift Zone, Ngorogoro Crater, Leakey digs), Ethiopia (High Plateau country and Addis Adaba), and Egypt (Cairo, Abu Simbel, Luxor, Karnak). In 1977 we spent the full calendar year teaching in Japan at an Institute on the south slopes of Mt. Fuji. I taught classes in geology, metallogeny and mining engineering and led study tours to gold, lead, zinc, and coal mining districts throughout Japan and in Western Australia (gold nickel, bauxite, iron), Malaysia (tin), and north Borneo (porphyry copper). Leslie taught basic and cultural English. At the end of the year, we spent a week touring Taiwan, Hong Kong, Thailand, and Singapore with our son, Hugh, who got his Ph.D. in geology at U.C. Riverside last year. In 1980 we visited geologic, archaeological, and cultural sites in Mainland China (Canton, Shanghai, Peking, Sian), Thailand (Chiang Mai, Ayutthaya, Bangkok), Nepal (Kathmandu - flew over Mt. Everest, Tiger Tops), India (Banara, Khajuraho, Agra, Delhi, Kashmir, Jaipur, Udaipur, Aurangabad, Ellora, Ajanta, Bombay), Austria (Vienna, Salzburg, Innsbruck), Switzerland (Zurich), Germany (Oberammergau, Munich, Heidelberg, Frankfurt, Koblenz), France (I.G.C. in Paris and other tourist sites nearby, Mont St. Michel, dolmen at Carnae, Cro-Magnon cave paintings at Les Eyzies, Tours, Puy de Dome, Angouleme). In 1982 we saw more of Egypt (Kom Omba, Edfu, Esna, Dendara, Abydos, Memphis, El Fayoum) and Ethiopia (Bahador, Lake Tana, Tisisat Falls, Gondar) and toured geologic and archaeological sites in Jordan (Amman, Petra), Israel (Jerusalem, Bethlehem, Jericho, Nazareth, Hero-

dian, Masada, Dead Sea, Sea of Galilee, Golan Heights, Acra, Caesarea, Tel Aviv), Greece (Athens, Mycenae, Corinth, Sparta, Mistra, Delphi, Thessaloniki, Mt. Olympus, Island of Santorini, Delos, Crete, Kos, Rhodes), Turkey (Ephesus, Istanbul), Italy (Pisa, Florence, Rome, Naples, Pompeii, Herculaneum, Mt. Vesuvius crater), and France (Nice, Marseille, Narbonne, Bordeaux).

We hope to continue our travels to Europe and then to Central and South America in the near future. We also hope that some of you will drop by so that we can exchange experiences and gossip about other old friends. I manage to bone up on the geology of the countries and collect samples as I go, so have clear memories and mementos of most of the places visited. I also work part time for the U.S.G.S. as a rehired annuitant so I can keep my finger on the pulse of geology, do some field work and enjoy life in general.

Best wishes to you all,  
Holly Wagner

PAUL WARREN (Ph.D., 1979) left the Institute of Meteoritics, University of New Mexico, to join John Wasson's phalanx of post-docs. Paul was married in July of 1983.

PAUL WEISSMAN (M.S., 1973; Ph.D., 1978) at JPL is now the world guru on where comets come from.

WAYNE M. WISEHART (B.A., 1938), 6110 V.6, Leisure Village, Camarillo, California 93010, writes: "When I graduated there were no geological jobs available. It was Depression time, and I took a job in the Probation Department of L.A. County. After 36 years of very interesting, but different type of work from that for which I was trained, I retired and am now living in a beautiful community. I travel, play

golf, bowl, belong to a gem and mineral club, and sing with a choral group. I have two children. My son earned his M.S. degree in Geology and is now employed by the U.S. Forest Service in Sonora, California. He also has an Engineering degree from the University of California at Berkeley. His name is RICHARD M. WISEHART (B.S., 1968; M.S., 1971) I have a close friend, EUGENE M. WAGGONER who graduated in 1939 from UCLA with a Master's degree in Geology. He is an internationally known consulting geologist and is headquartered in the Bay area."

HENRY K. WONG (B.S., 1981), 11939 Sproul Street, Norwalk, California 90650, is a Master's candidate in Geology at the Department of Geological Sciences, The University of Texas at Austin, Austin, Texas 78712-7909.

---

**Y**

DAVID YUEN (Ph.D., 1978) received a promotion to Associate Professor with tenure at Arizona State University in Tempe.

---

**Z**

ALLISON ZWEIGLER BORMUTH (B.S., Engineering Geology, 1979) see Bormuth.

Dear Alumni:

You can help us to improve the Department of Earth and Space Sciences. The questionnaire on the back side of this page has been expanded over preceding year-models: When you return this self-mailer (we pay the postage--please make sure to staple or tape it closed), your answers will be considered very carefully by the Department. Your response may be as short or as lengthy as you wish. We are interested in *anything* you feel might be relevant.

If you have questions or additional comments, you are always welcome to telephone Vicki at (213) 206-8439 or leave a message for the Newsletter editors in the Departmental Office (213) 825-3880.

We are going to attempt to have future Newsletters finished by the first each year, and next year's Newsletter will have some new features (e.g., photographs and articles about alumni activities as well as those of faculty, staff, and students). If you have anything to add in the way of interesting stories or intriguing photographs, please send them along. If next year's Newsletter is dry reading, it's partly your fault!



NO POSTAGE  
NECESSARY  
IF MAILED  
IN THE  
UNITED STATES

---

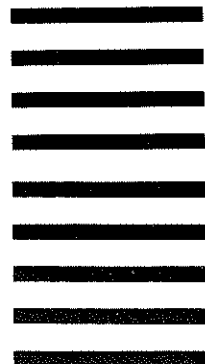
**BUSINESS REPLY MAIL**

FIRST CLASS PERMIT NO. 22618 LOS ANGELES, CA

---

POSTAGE WILL BE PAID BY ADDRESSEE

The UCLA Foundation  
Department of Earth and Space Sciences  
405 Hilgard Avenue  
Los Angeles, California 90024



Name: \_\_\_\_\_

Address: \_\_\_\_\_

\_\_\_\_\_  
UCLA Degree(s) and date(s):

Present position, company or institution, address:

Recently transferred? Promoted? Retired?

Professional and other activities (degrees from other schools, current work, research studies, awards, etc.):

Publications, offices in professional societies:

News of other alumni, etc.; other information:

What do you like best/least about the Newsletter? Any suggestions?